

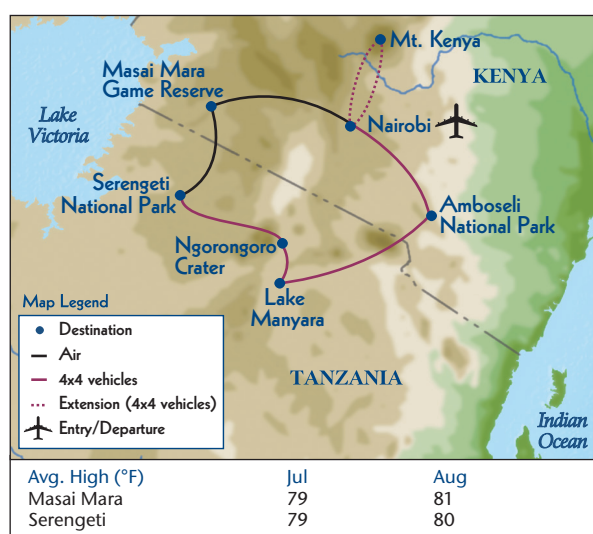
Exclusive UCLA departure – July 16-31, 2026

# Classic Safari: Kenya & Tanzania

**16 days from \$14,296 total price from Boston, New York, Wash DC**

**(\$13,495 air, land & safari inclusive plus \$801 airline taxes and fees)**

*On safari ... it's one of the most alluring phrases in all of travel. And Kenya and Tanzania count among the most alluring places to be "on safari." Join our small group as we travel from grasslands to highlands, to reserves and national parks, and enjoy intimate game drives.*



Giraffe roam Amboseli National Park in the shadow of Mt. Kilimanjaro.

## Physical Activity Level



**Easy/Moderate**

*Refer to page 5 for more information.*

## Your Tour at a Glance

Day	Itinerary	Hotel	Rating
1	Depart U.S. for Nairobi		
2-3	Nairobi	Fairmont The Norfolk	Deluxe
4-5	Amboseli	Amboseli Serena Lodge	Sup. First Class
6	Lake Manyara	Lake Manyara Serena Lodge	Sup. First Class
7-8	Ngorongoro	Ngorongoro Serena Lodge	Sup. First Class
9-10	Serengeti	Serengeti Serena Lodge	Sup. First Class
11-13	Masai Mara	Sarova Mara Game Camp	Sup. First Class
14	Nairobi	Fairmont The Norfolk	Deluxe
15	Nairobi/Depart for U.S. (overnight flight)		
16	Arrive U.S.		

*Ratings are based on the Hotel & Travel Index, the travel industry standard reference.*

### Day 1: Depart U.S. for Nairobi, Kenya

**Day 2: Arrive Nairobi** After arriving in Nairobi, we transfer to our hotel. As arrival times may vary greatly, we have no group activities or meals planned.

**Day 3: Nairobi** We see highlights of Kenya's cosmopolitan capital city today, stopping for a tour of the Karen Blixen Museum, the one-time home of the Danish writer who, as Isak Dinesen, wrote *Out of Africa*. We also visit the Giraffe Centre, where we see several of the endangered Rothschild's giraffe here up close. Tonight, we enjoy a welcome dinner at our hotel. *B,D*

**Day 4: Nairobi/Amboseli** We transfer this morning to Amboseli National Park in the shadow of snow-capped Mt. Kilimanjaro, the Maasai's "white mountain" and the world's tallest free-standing mountain at 19,336 feet. Known for its many elephants, Amboseli boasts wide, dry plains also teeming with herds of wildebeest, zebra, impala, and giraffe, as we may see on this afternoon's game drive. *B,L,D*

**Day 5: Amboseli** Early this morning we visit a nearby Maasai village. Later: game drive and time for relaxing at our lodge in the foothills of Kilimanjaro beneath a copse of feathered acacia trees. *B,L,D*

**Day 6: Amboseli/Lake Manyara** We travel today to peaceful Lake Manyara National Park, one of Tanzania's smallest and most diverse parks. Bordered by the dramatic Western Escarpment of the Great Rift Valley, Lake Manyara is notable for its abundant birdlife, diverse vegetation, tree-climbing lions, plains animals, and hippos. *B,L,D*

**Day 7: Lake Manyara/Ngorongoro Conservation Area** This morning we enjoy a game drive at Lake Manyara then set out for Ngorongoro, a UNESCO Conservation Area, International Biosphere Reserve, and site of Ngorongoro Crater, the world's largest intact volcanic caldera. On the crater's floor is Africa in microcosm: grassland, swampland, lakes, forest, mountains, and unparalleled wildlife. *B,L,D*

**Day 8: Ngorongoro Crater** On our morning tour of the 100-square-mile crater we have our only chance to see all of Africa's "Big Five" – elephant, buffalo, rhino, lion, and leopard – in one place. *B,L,D*

**Day 9: Ngorongoro/Serengeti National Park** We're bound this morning for the Serengeti, the Maasai's 5,700-square-mile "endless plain" considered Africa's finest park and one of the world's last great wildlife refuges. En route we visit 31-mile Olduvai Gorge, where in 1959 anthropologist Mary Leakey

discovered the 1.8-million-year-old skull of *Australopithecus boisei* – and revolutionized the study of human evolution. Reaching our lodge, we embark on an afternoon game drive. *B,L,D*

**Day 10: Serengeti** Twice a year, some two million wildebeest, 200,000 zebra, and 300,000 Thomson’s gazelle migrate to new grazing lands between Masai Mara and the Serengeti, sparking one of nature’s most spectacular sights. But the Serengeti’s vast treeless plains teem with animal life year-round, and this is the best place to see lion and cheetah up close. Perhaps we will on today’s two game drives. *B,L,D*

**Day 11: Serengeti/Masai Mara** We leave Tanzania today, crossing into Kenya and continuing on to Masai Mara by air. Kenya’s premier game reserve rich with animal life, the Mara is the traditional homeland of the Indigenous Maasai people. Known especially for the annual migration that sees some two million wildebeest, plus hundreds of thousands of other plains game migrate here from the Serengeti (Masai Mara being the continuation of the Serengeti in Kenya), the Mara sits in the Great Rift Valley and comprises 583 square miles of vast plains, acacia forests, grass-covered hills, and slow-flowing rivers. We arrive at our tented camp late this morning then have our first game drive here later this afternoon. *B,L,D*



We’re sure to see zebra.

covered hills, and slow-flowing rivers. We arrive at our tented camp late this morning then have our first game drive here later this afternoon. *B,L,D*

**Post-Tour Extension**

July 30-August 2, 2026

**Mount Kenya**

3 days/2 nights from \$1,895 total price  
Single Supplement: \$695

*Encounter more wildlife during a stay at the Mount Kenya Safari Club, which houses the conservancy founded by actor William Holden.*

**Your Tour Price Includes**

- 2 nights’ accommodations: 2 nights at Fairmont Mount Kenya Safari Club (Deluxe); day room in Nairobi at Four Points by Sheraton Nairobi Airport (First Class)
- 6 meals: 2 breakfasts, 2 lunches, 2 dinners
- Extensive sightseeing, including animal orphanage at Mt. Kenya Wildlife Conservancy; game drive; and Jane Goodall Chimpanzee Sanctuary
- Services of an Odysseys Unlimited representative
- Private transportation
- Transfer to Nairobi airport
- Gratuities for dining room servers, airport and hotel porters, and driver/guide

Guests on the extension will leave Nairobi on Day 15.

“ THERE IS ALWAYS SOMETHING NEW OUT OF AFRICA.”

– PLINY THE ELDER

**Day 12: Masai Mara** We spend today “on safari,” venturing out on early morning and late afternoon game drives during prime viewing hours. *B,L,D*

**Day 13: Masai Mara** Again today we’re “on safari,” with morning and afternoon game drives in this reserve that is just slightly larger than the state of Rhode Island. *B,L,D*

**Day 14: Masai Mara/Nairobi** Today we reenter the urban world as we fly from the Mara back to Nairobi. Tonight we toast our safari adventure at a farewell dinner. *B,L,D*

**Day 15: Nairobi/Depart for U.S.** After a morning at leisure, we transfer to the Nairobi airport and board our connecting flight to the U.S. *B*

**Day 16: Arrive U.S.** We reach the U.S. today and connect with our flights home.



Kenya’s native Maasai people

**Your Tour Price Includes**

- Round-trip air transportation from listed cities; all flights within itinerary
- 13 nights’ accommodations: 10 nights in Deluxe and Superior First Class hotels and lodges; 3 nights in tented camp
- 36 meals: 13 breakfasts, 11 lunches, 12 dinners
- Extensive game viewing as described, including all park entrance fees
- Mineral water while on safari
- Services of an Odysseys Unlimited Tour Director
- Private 4x4 transportation throughout your trip with guaranteed window seating
- Luggage handling for one bag per person
- Gratuities for driver/guides, dining room servers, and airport and hotel porters
- \$100 frequent traveler credit towards your next UCLA/Odysseys Unlimited tour (\$200 after 3 tours; \$300 after 10 tours)
- UCLA lecturer’s participation is contingent on a minimum of 15 paying travelers

**Meet Your Faculty Lecturer**

Tony Friscia

Director of the UCLA Cluster Program and Associate Professor in the Department of Integrative Biology and Physiology



Tony Friscia is the Director of the UCLA Cluster Program and Associate Professor in the Department of Integrative Biology and Physiology. He teaches courses on biological evolution and human anatomy, and has won a number of teach awards for his efforts. He is co-editor of a volume on fossil mammalian carnivores, *Carnivoran Evolution: Form, Function, and Phylogeny* (Cambridge University Press, 2010) and author of numerous articles on topics ranging from carnivores to birds, and from the local La Brea Tar Pits to fossils from Africa. He has been doing field work in Kenya since 2009, and has traveled extensively throughout Africa.



Leopard in the Serengeti

**Tour Departs: July 16, 2026**

Prices include international airfare and all taxes, surcharges, and fees

Boston, New York, Washington, DC	\$14,296
Chicago, Philadelphia	\$14,596
Atlanta, Dallas, Houston, Los Angeles, San Francisco, Seattle	\$14,696

Baltimore, Charlotte, Cincinnati, Cleveland, Denver, Detroit, Miami, Minneapolis, Orlando, Phoenix, Portland (OR), Tampa	\$14,796
--	----------

**Land Only (transfers not included) \$12,795**

Please call if your city is not listed. Prices are per person based on double occupancy and include airline taxes, surcharges, and fees of \$801, which are subject to change until final payment is made.

Single travelers please add \$2,195. All tour prices above (excluding airline taxes, surcharges, and fees) are guaranteed.

Depending on flight schedules, certain U.S. cities may require a departure one day prior to the listed schedule above. Business Class upgrade on round-trip Trans-Atlantic flight: \$5,995 per person from Boston, Dallas-Fort Worth, Houston, Miami; all other cities \$6,995 in addition to the above costs (upgrade is subject to availability and pricing is subject to change).



THE SMALL GROUP TRAVEL EXPERIENCE

*Important Information About Your Tour*

# General Terms and Conditions

The following is intended to provide you with a description of what to expect when you reserve a tour with Odysseys Unlimited. Upon booking, you will be asked to acknowledge your acceptance of the full Terms and Conditions on My Odyssey, our secure on-line portal.

### Tour Prices

Tour prices quoted are guaranteed through December 31, 2026, and include accommodations based on double occupancy; airfare from your departure city; airline taxes, surcharges, and fees, and port charges and cruise line fees (where applicable), which are subject to change until final payment has been made; internal air, rail, and motorcoach transportation; meals, sightseeing, and transfers as described; hotel taxes; entrance fees for included sightseeing; the services of an Odysseys Unlimited Tour Director; services of a UCLA Lecturer or Host with a minimum of 15 travelers; luggage handling for one bag per person; and all gratuities as described below. Please note that the cost of air upgrades is subject to change.

### Gratuities

Tour prices include all gratuities for local guides, dining room servers, airport and hotel porters, and all drivers on base tours and on optional extensions when accompanied by an Odysseys Unlimited representative. Please note that gratuities for the Odysseys Unlimited Tour Director and shipboard personnel (if a cruise is included in your tour) are not included. These tips are optional and should be extended on a voluntary basis. Gratuities are not included on "On Your Own" optional extensions.

### Not Included in Your Tour Price

Airfare from your hometown to your departure city; costs of passports and visas; personal expenses such as beverages, laundry, room service, and meals not specified; immunizations and inoculations; communications charges;

airport transfers when purchasing a land-only package or when selecting alternate tour arrival and/or departure dates; gratuities to your Odysseys Unlimited Tour Director and shipboard personnel (if a cruise is included in your tour), which are at your discretion (suggested gratuities: \$10-\$15 per guest, per day); and a Travel Protection Plan. Additional baggage fees levied directly by the airline(s) may apply and are subject to change at any time. You should confirm directly with your airline(s) prior to departure.

### Registration and Payment

A deposit of \$500 per person confirms your reservation. Full payment is due at least 95 days prior to departure and may be made by personal check or credit card. Odysseys Unlimited, Inc. reserves the right to cancel any reservations that are not paid in full at any time after final payment is due. If you make your reservation after the final payment date, payment in full will be required upon reservation.

### Cancellations and Refunds

If you must cancel your tour, the effective date of cancellation will be upon our receipt of your written notification. Refunds for cancellations are subject to the following per person charges:

*For all tours (except as noted)*

<u>Prior to departure</u>	<u>Charge</u>
95 days or more:	\$200
94-65 days:	25% of tour price
64-45 days:	50% of tour price
44-30 days:	75% of tour price
29-0 days:	No refund

*For Africa's Wildlife, Egypt & the Eternal Nile, Journey through Vietnam, Macbu Picbu to the Galapagos, Southeast Asia Odyssey*

<u>Prior to departure</u>	<u>Charge</u>
95 days or more:	\$200
94-65 days:	50% of tour price
64-30 days:	75% of tour price
29-0 days:	No refund

Please note that we will not refund the cost of any unused portion of your tour package, should you or your travel companion cancel your participation during the tour. If because of low participation Odysseys Unlimited, Inc. cancels your tour, you will receive a complete refund of all payments you have made to us.

### Pre-Departure

Upon reservation, you will be able to access all information regarding your tour in My Odyssey, our secure on-line portal. This material includes your invoice, a detailed day-by-day itinerary, visa requirements (if applicable), and more. Your final tour documents, including airline itineraries (with e-ticket numbers), will be available in the portal two to three weeks before departure.

### Single Travelers

We welcome single travelers, and offer a limited number of single accommodations on each tour. Because hotel and cruise rates are priced by the room or cabin, the per person cost for accommodations occupied by one person is higher than that shared by two people. We will endeavor to keep single supplements at a reasonable cost. Please note that single rooms in many foreign hotels may be smaller than those to which you are accustomed.

### Changes to Your Reservation

A fee of \$50 per person will apply to all air-inclusive guests who have chosen an alternate arrival or departure date. Once inside the final payment date for your tour, additional hotel night(s) and/or transfer(s) that you may have added to your reservation are non-refundable. From 94 to 30 days before departure, an administrative fee of \$100 per person will apply to any changes you make to your reservation, in addition to any fees or penalties imposed by airlines, hotels, or other third parties. Changes are subject to availability and cannot be guaranteed. If your reservation changes from double occupancy to single occupancy for any reason or at any time, you will be charged the single supplement.

Please note that no changes to your name(s) or departure date are allowed within 95 days of departure. No changes to your reservation can be made within 30 days of departure.

### Required Information

Upon reservation, we will need to obtain from you the following, in accordance with the Transportation Security Administration's (TSA) Secure Flight program (for details, please visit [www.tsa.gov](http://www.tsa.gov)), as well as for our travel partners: for **international tours – your full name as it appears on your passport, date of birth, and gender**. In addition, airlines may require that we provide them with your contact information prior to departure. In the event an airline ticket is issued with incorrect information you have provided, or if you use a different passport (international tours) or other form of government issued photo identification (domestic tours) than originally cited, you will be responsible for charges associated with the ticket's reissue.

### Travel Documents

A passport valid for at least six months after the completion of your tour is required for U.S. citizens on all of our international tours. If your tour requires a visa(s), we strongly recommend that you have at least six blank visa pages available; for tours not requiring a visa(s), we recommend that your passport have at least three blank visa pages. We will send you specific visa and entry requirements after you make a reservation. You are responsible for obtaining these documents. If you need to obtain a visa, we recommend our preferred provider G3 Global Services. If you are traveling with a minor, please contact us for special entry requirements. If you are not a U.S. citizen, please contact your embassy or consulate to ensure you obtain the proper documentation.

### Smoking

For the convenience of the majority of our travelers, Odysseys Unlimited, Inc. has a No Smoking policy (including e-cigarettes and vaping) on all tour buses. We will arrange sufficient rest stops so those who wish to smoke may do so.

### Health and Medical Issues

We welcome all travelers, but request that you be in good health to participate in an Odysseys Unlimited, Inc. tour. All of our tours involve a reasonable amount of walking (typically two to three miles per day),

often uphill or on uneven or cobblestone streets. **You must be able to get on and off motorcoaches and boats on your own as well as keep pace with the tour group.** We regret that we cannot provide individual assistance if you require the use of a wheelchair or have other personal needs; in such cases you must be accompanied by a companion who will assist you. Please note that many of our itineraries, for reasons beyond our control, do not accommodate wheelchairs. Please call or e-mail us to inquire and we will do our best to answer any questions you may have.

We ask that all guests review our guidelines for health on tour, which can be found on our website: [www.odysseys-unlimited.com/travel-health](http://www.odysseys-unlimited.com/travel-health).

We reserve the right to remove anyone whose physical condition or behavior, in our opinion, compromises the operation of the tour or detracts from the enjoyment or safety of the other tour members. In that event, the UCLA Alumni Association and Odysseys Unlimited, Inc. assume no financial responsibility for any unused portion of the tour. While we do our best to accommodate food allergy concerns, we cannot guarantee zero cross-contamination.

### Air Transportation

Your tour package includes round-trip airfare based on economy class from designated departure cities as shown. Airfares from other cities are available upon request. Airline upgrades at additional cost may be available on request for the roundtrip trans-Atlantic or trans-Pacific portion of your flights.

**Since international and domestic air schedules are subject to change at any time, we recommend that if you choose to make your own airline reservations, you do not purchase non-refundable tickets or those with high penalties for changes.** In addition, we recommend that you not purchase your tickets until final payment is due. The UCLA Alumni Association and Odysseys Unlimited shall not have any liability for any loss resulting from tour cancellations or changes in international gateways, travel dates, or airline schedule changes.

If an air schedule requires an overnight stay in a gateway city, the cost of the overnight will be at your expense. **Please note that seat assignment on your flight is usually done at check-in. Odysseys Unlimited is unable to guarantee any seat assignments.**

When planning our tours, we contract with those airlines that we feel provide the level of service, routings, and value necessary for your entire trip. While another airline may offer more direct service, it may be at a price unavailable at the lower group rates that enable us to offer you the best possible travel value. Please note that loyalty program mileage credits are issued at the discretion of the airline(s) and may not be available for the flights on your tour. If you prefer to make your own airline reservations, inquire about the "land only" price available on our tours.

### Responsibility

The liability of the UCLA Alumni Association, as sponsor, and Odysseys Unlimited, Inc., as tour operator, is strictly limited. Odysseys Unlimited, Inc. purchases transportation, hotel accommodations, and restaurant and other services from independent suppliers not under its control. It serves only as an agent for these suppliers in securing tour arrangements, and therefore will not accept responsibility for wrongful, negligent, or arbitrary acts or omissions of these independent contractors, or of their employees, agents, servants, or representatives. The UCLA Alumni Association and Odysseys Unlimited, Inc. are not liable for injury, damage, loss, accident, or delay that may be caused by events not within its control, including, without limitation, acts of terrorism, war, strikes, the defect of any vehicle, or the negligence or default of any third party. All coupons, receipts, and tickets issued are subject to the terms and conditions specified by the air carriers, cruise line, and other independent suppliers. Odysseys Unlimited, Inc. will make every effort to operate our tours as planned, but we reserve the right to make itinerary changes as necessary. If unforeseen circumstances require us to change a hotel, we will select alternative accommodations of the same or better quality. Cruise itineraries may change due to factors such as government regulations, water levels, or weather conditions.

# UCLA alum RESERVATION FORM

To reserve your place on tour, please complete this Reservation Form and email it to [travel@alumni.ucla.edu](mailto:travel@alumni.ucla.edu), or fax to 310-209-4271.

Once this request is received by UCLA Alumni Travel, a Travel Counselor from Odysseys Unlimited will contact you within two business days to review the tour information and provide you with a secure link to enter your credit card information. Your reservation is not confirmed until your deposit is paid and processed. Payment may be made by American Express, Discover, MasterCard, or VISA, or by personal check. Final payment is due 95 days prior to departure. If paying by check, please make check payable to **Odysseys Unlimited, Inc.** and include with the form.

Send to: **Odysseys Unlimited, Inc.**  
**One Newton Place**  
**275 Washington Street, Suite 300**  
**Newton, MA 02458**

If you have any questions, please call UCLA Alumni Travel at 310-206-0613 or e-mail [travel@alumni.ucla.edu](mailto:travel@alumni.ucla.edu).

<p>Tour Name _____</p> <p>Departure Date _____</p> <p>Pre- or Post-Tour Extension (as described on tour page): Please sign me/us up <input type="checkbox"/></p>
--

I/we would like to request \_\_\_\_\_ place(s). (Deposit amount is \$500 per person.)

Full Passport Name \_\_\_\_\_ Date of Birth \_\_\_\_\_ Gender \_\_\_\_\_

Full Passport Name \_\_\_\_\_ Date of Birth \_\_\_\_\_ Gender \_\_\_\_\_

Address \_\_\_\_\_

City \_\_\_\_\_ State \_\_\_\_\_ ZIP \_\_\_\_\_

Home Ph. (\_\_\_\_\_) \_\_\_\_\_ Cell Ph. (\_\_\_\_\_) \_\_\_\_\_

E-mail \_\_\_\_\_ Badge Name(s) \_\_\_\_\_

Please book my/our air from \_\_\_\_\_ I/We request an air upgrade to \_\_\_\_\_

I will share a room with \_\_\_\_\_ I request a single room (limited availability)

I/We request an upgrade to a Highland Villa (for Machu Picchu to the Galapagos only)

**UCLA Alumni Travel is an advantage reserved for UCLA Alumni Association sustaining donors\*.**

Please select an option below:

- I am currently a sustaining donor.
- I have made a \$100 donation at [travel.alumni.ucla.edu/donate](http://travel.alumni.ucla.edu/donate).

\*Sustaining donors include Gold, Life and Blue Members as well as anyone that has made a qualifying donation of \$100 or more to the UCLA Alumni Association Support Fund in the past year.